

# INDUSTRIAL GSM-GPRS MODEM

WITH DATA/FAX - SMS - VOICE  
AND INTERNET FUNCTIONALITIES

**Automation**

**M2M communications**

**Remote control-telemetry**

**Security**

**TCP/IP  
inside**



INDUSTRY

# INDUSTRIAL GSM-GPRS MODEM

WITH DATA/FAX - SMS - VOICE AND INTERNET FUNCTIONALITIES

Audiotel has developed a family of GSM/GPRS modems optimized for industrial applications. They have a rugged metallic case, they are ease to install, to connect and flexible to use. These characteristics make this product ideal for every application of mobile communication where it is necessary to integrate the GSM communication in a professional and reliable way.



Transmission and reception of data - fax - sms - voice - internet access from every industrial device equipped with a V.24 RS232 serial port

Ideal for every automation, M2M (machine to machine), remote control, telemetry, security, environmental monitoring, automotive applications

Supplied with wall, DIN and OMEGA rail fixing elements



AUDIOTEL ENGINEERING S.p.A.

Head Office: Via del Chioso, 6 - 24030 MOZZO (Bg) Italy

Tel. +39 035 467011 ISDN - Fax +39 035 614000

e-mail: info@audiotel.it Internet: http://www.audiotel.it



## VERSIONS

**BASE GSM** GSM modem with every basic function:

- Data/fax transmission/reception
- Voice calls
- SMS transmission/reception

**PLUS GSM** GSM modem with every basic function: data, voice, SMS and with autotest, telemanagement and telemaintenance functions:

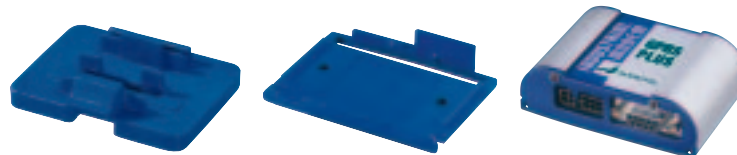
- Modem status autocheck with modem functions autorestore in case of failures
- Teleconfiguration of every modem parameter
- Remote control of RF field strength and of other radio parameters
- Remote Firmware download
- Open Platform for the realization of custom application using C language

**BASE GPRS** GSM/GPRS modem with every basic function:

- Data/fax transmission/reception
- Voice calls
- SMS transmission/reception
- Internet access with GPRS 8 class
- Mobile station B class

**PLUS GPRS** GSM/GPRS modem with every basic function, complete of TCP/IP stack and with autotest, telemanagement and telemaintenance functions:

- AT commands set dedicated to TCP/IP stack management
- Modem status autocheck with modem functions autorestore in case of failures
- Teleconfiguration of every modem parameter
- Remote control of RF field level and of other radio parameters
- Remote Firmware download
- Open Platform for the realization of custom application using C language



DIN and OMEGA rail fixing elements

Wall fixing element

INDUSTRIAL GSM/GPRS modem

## FUNCTIONAL FEATURES

**GSM PERFORMANCES**

- Voice and emergency calls (TCH / FS)
- SMS type MT/MO/CB/PDU
- Asynchronous non transparent GSM data transmission  
2400 bit/s 4800 bit/s 9600 bit/s
- CSD until 14.4 kbps
- USSD
- V.110
- Automatic fax 3 group (I, II class)

**GPRS CONNECTIVITY**

- GPRS MULTISLOT 8 class
- GPRS MOBILESTATION B class
- GPRS max. 85.6 kbps (downlink)
- Coding schemes CS1, CS2, CS3, CS4
- PPP-stack

**DATA INTERFACE**

- V.24 RS-232
- AT commands control (standard ETSI 07.05, 07.07 and Audiotel proprietary for TCP/IP)

**OUTPUT POWER**

- 4 class (2W) for EGSM900
- 1 class (1W) for EGSM1800

**POWER SUPPLY**

- 8V – 32V for GSM900/1800

**INPUT CURRENT**

- Idle 20mA @ 12V
- Talk 150mA 900MHz @ PCL5
- Talk 130mA 1800MHz @ PCL0

**TEMPERATURE RANGE**

- Operating: from -20°C to +55°C
- Storage: from -40°C to +85°C

## MECHANICAL FEATURES

- DB9 RS232 serial port connector
- MICROFIT 4 pin connector for power supply
- MICROFIT 6 pin for voice and Sync signal
- SIM plug-in card reader
- Status modem LED
- SMA F external antenna connector
- Wall, DIN and OMEGA rail fixing elements
- DIMENSIONS: 69,5X80X24mm
- WEIGHT: about 120g

## PACKAGE CONTENTS

- GSM / GPRS modem
- Wall, DIN and OMEGA rail fixing elements
- Power supply cable

## AVAILABLE ACCESSORIES

- Data serial cable
- External antennas
- Voice cable
- 230V/12V external power supply

## APPLICABLE STANDARD

- EN60950 (Health and Safety)
- ETS 301489-1, ETS301489-7 (EMC)
- 3GPP TS 51.010-1, v4.0.2 (GSM 11.10-1), Draft ETSI EN 301511, v7.0.0 (GSM 13.11)